

COREL UNDER

bulletin

JULY 2015

Publication of Corel Down Under Inc.

Corel Down Under Inc. Mail address: PO Box 627 Heathmont Victoria 3134 The CDU phone: 9876 9161

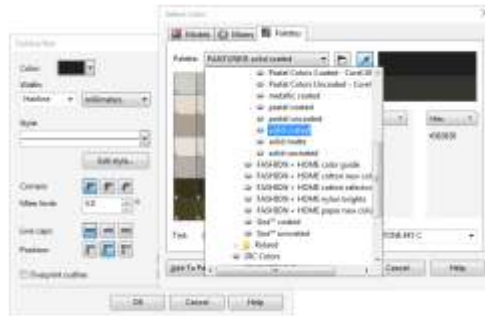
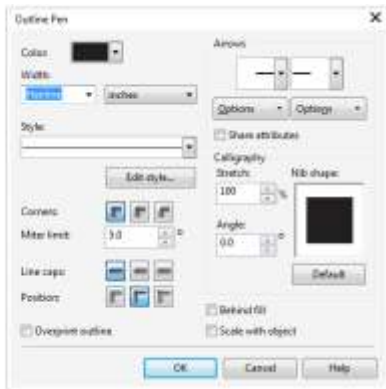
Setting up colours for cutting machines.

I was asked by one of my clients recently if I could help him out and teach him and his staff some basic things about Corel Draw. This client used Draw to design stickers and signs which he needed to print and cut on his Roland printer/cutter. The Roland is a great machine which prints an image in four colour process and then cuts out the image following a 'Roland' cutting line. So it was vital that they could insert a Roland cutting line once they finished their design.



Corel Draw has this along with many other colours. You simply need to know where to look.

First, bring in the object that you want to print and have your Roland, (or other type of cutting machine), to cut out. Now you have to give the object an outline. The only difference with the outline from any other colour outline is that you must pick the Roland 'Cut Contour' colour.



Select your object and then open up your outline tool as you would normally do. It is now just a matter of navigating through until you find the

Roland colour swatches.

Choose 'Hairline' for the outline thickness. This is only a guide for the machine to cut out the object and all it needs is a very fine line to follow.

Now choose Palettes and open up the drop down menu. You will see right down at the bottom, one

called Roland. Choose the Roland Versaworks and the pink 'Cut Contour'. This applies a pink line around the subject which the Roland recognizes as the path the cutter must follow.

This will give you a perfect cut, within the constraints of the machine of course.



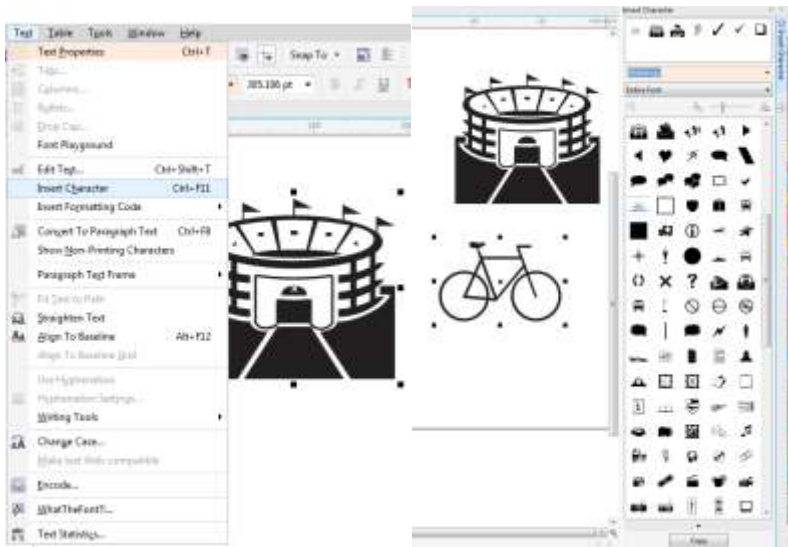
The CDU Committee meets 1st Tuesday of each month.
7pm until 9.30pm - 8 Pamela Place, Ringwood North, 3135

Next CDU Meeting will be held on third
Tuesday in month - 18th August 2015

Vector Images - Many already in Corel Draw!

Are you working on that 'special' project and you realise that you need an illustration? Before you go downloading a cheap and nasty low resolution bitmap from the web, first check out what you already have in Corel Draw. There are several areas you can look. Begin by checking out the Artistic Media tool. These footprints behind this text are amongst the many items in this tool. The interesting thing with this tool, is how you can apply the media. The borders here have been applied with the 'spray can' and are applied by simply drawing a line.

This is great for applying things like borders. However, for single objects you should check out your fonts. The fancy fonts like 'webdings' offer many different objects that



can be turned to curves and treated as any other 'vector' object.

Go to the 'text' pull-down and select 'Insert Character'.

The Insert Character dialogue box will open up. Change the font to the one you want and select the symbol you want. The quickest way in CorelDRAW X7 to insert the symbol is to simply drag it onto your page. At this stage it is still a

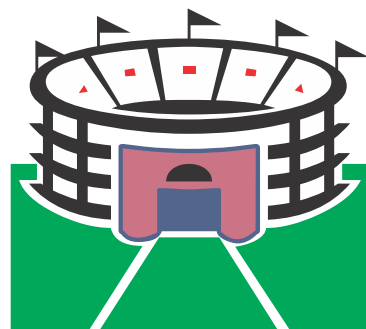
font. You should convert it to a curve. Pull down 'Object' and select 'Convert to Curves'. The font is now a curve which you can make as large or small as you like without losing any quality, because it is now a true 'vector' shape. **Tip:** A quick way to change it to a curve, *Ctrl + Q*.

Once you have converted to curves,



you can now 'break apart' which is also under the 'Object' menu. If you are new to CorelDRAW X7 or still running on X6 or earlier, 'Object' used to be called 'Arrange'.

With many objects, when you break them apart they are going to 'fill in' as we see here. Go up to 'View' and select 'Wireframe' and you now see the object in a wireframe view. (As above). While in this mode you can select the white parts, (now black), and either change back to white or choose another colour.



You will need to alter the order of objects, by bringing bits to the front or behind other objects, but you have complete control now over your object that started life as a font!

