

COREL UNDER

bulletin

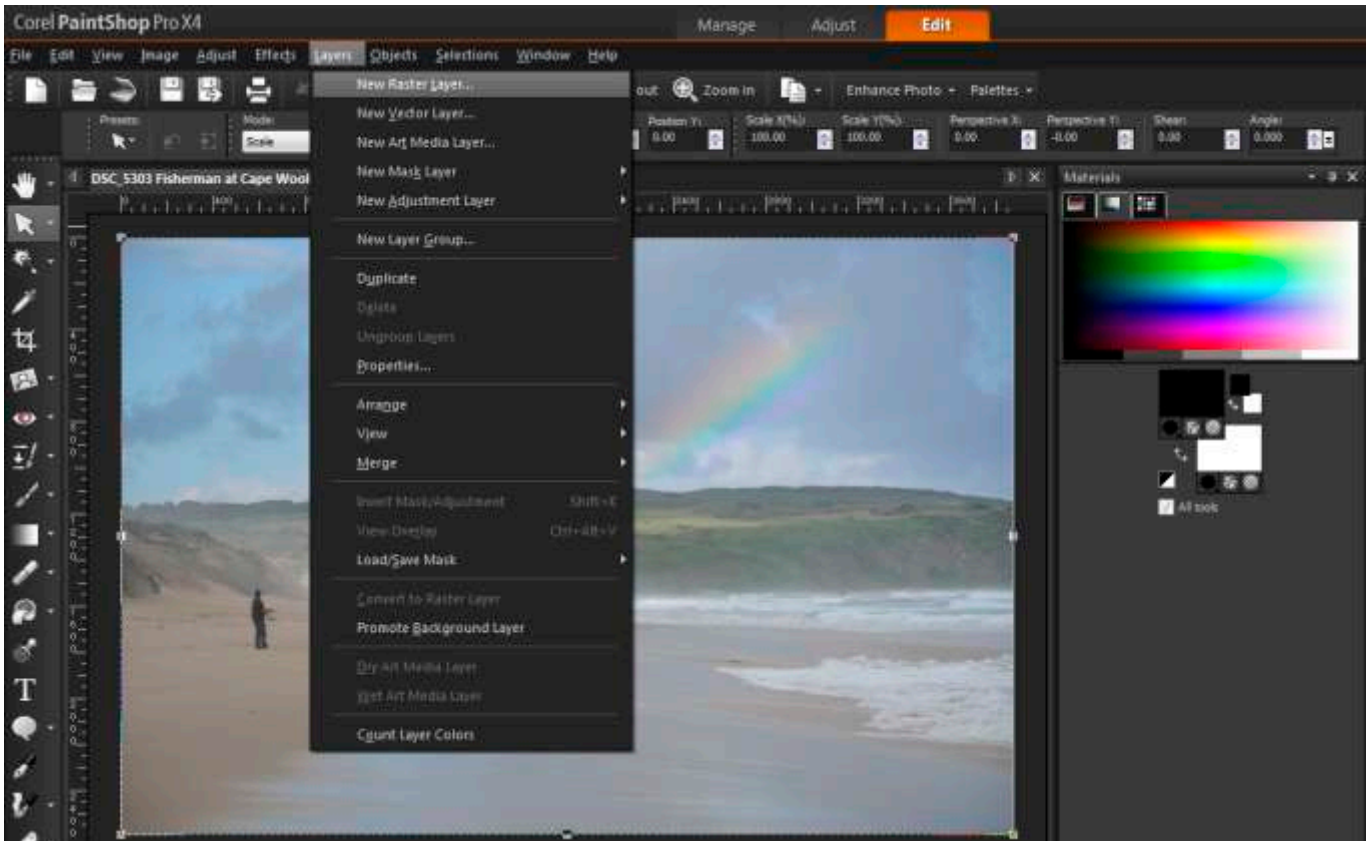
OCTOBER 2015

Publication of Corel Down Under Inc.

Corel Down Under Inc. Mail address: PO Box 627 Heathmont Victoria 3134 The CDU phone: 9876 9161

Using Layers in Paint Shop Pro.

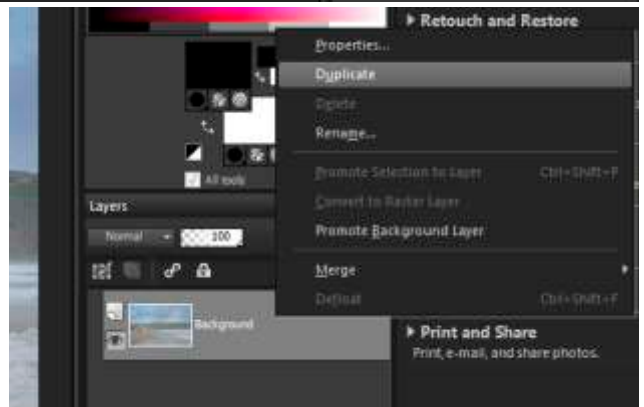
You will find the layers tab along the top of the screen in Paint Shop Pro. Click on the Layers tab and a drop down menu will reveal all the layer options. You will see immediately that Paint Shop



Pro offers something different than bitmap only programs do. You have a choice of both Raster and Vector Layers.

Pressing F8 will toggle back and forth, showing or hiding the layer menu on the right hand side of the workspace. You will see when you press F8 that you have one layer to begin with. This is called the 'Background Layer'.

If you right click on the background layer, a new dialogue box will open up allowing you to make a

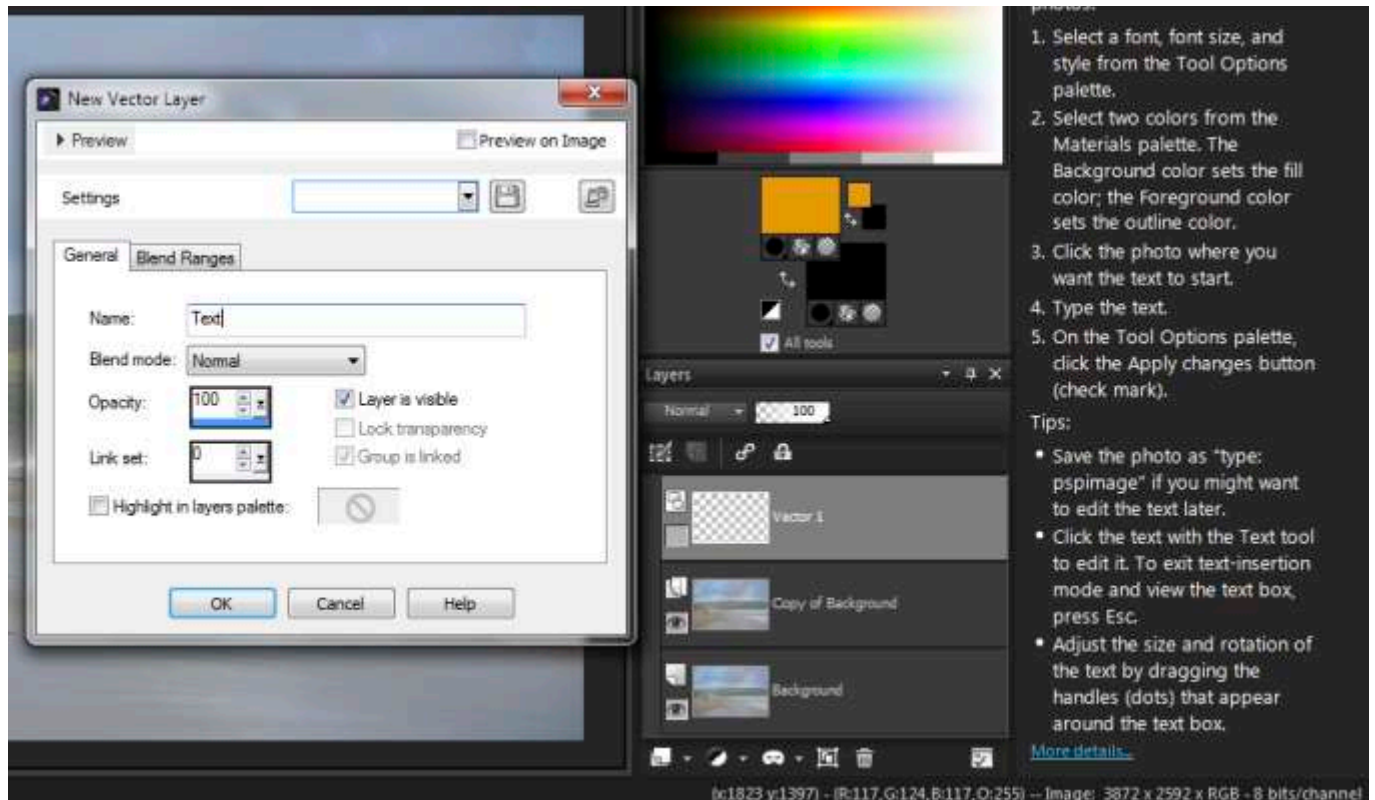


The CDU Committee meets 1st Tuesday of each month.
7pm until 9.30pm - 8 Pamela Place, Ringwood North, 3135

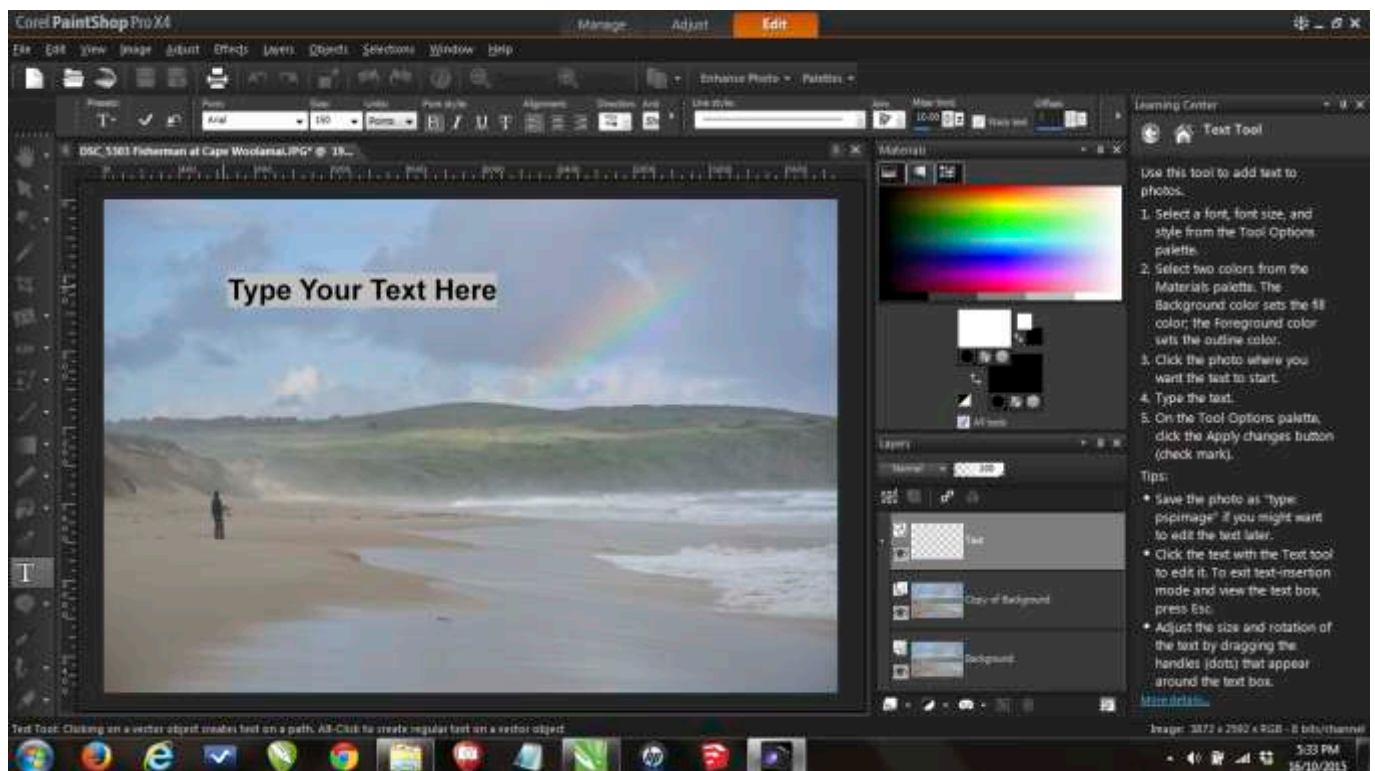
Next CDU Meeting will be held on third
Tuesday in month - 17th November 2015

duplicate of the 'background layer'. It is advisable to make a duplicate first thing so that your original layer is not touched. That way you have it to come back to should you need it. This can often get you out of trouble.

The great thing about having the 'Vector' layer is that you can add text as true vector type rather than



as raster text as a bitmap only program would. Create your 'vector' layer and then rename it as 'text'



or whatever name makes sense to you. Having done that you can then type away in this layer. Layers give you much more control over your photographs. I'd suggest you start exploring layers for yourself. Jenette and Kelvin will be able to show you much more in the use of layers so take advantage of them and don't be afraid to ask questions after their presentations.